

2. Wireless Router Connection

2.1 Download APP

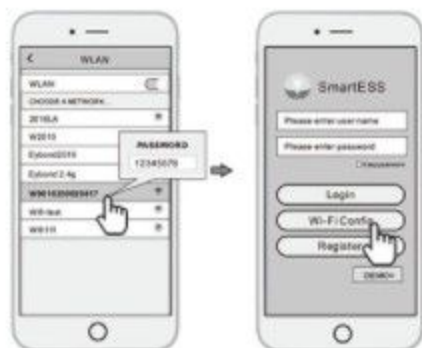
- 1 Scan the QR Code on the right side and download the APP.



SmartESS(iOS)



SmartESS(Android)



2.2 Connect Wi-Fi Datalogger

- 1 Select the same number of Wi-Fi PlugII PN to connect on your phone WLAN. (Initial Password:12345678)
- 2 Open the APP, tap the **Wi-Fi Config** button to enter this page.

2.3 Network Setting

- 1 According to the prompts, type in the information to finish the network setting.
- 2 After the Wi-Fi PlugII is restarted, reconnect the Wi-Fi which connected by step 2.1.

